

# Community Advisory Committee Meeting

Mobile Downtown Airport

June 22, 2020



# Welcome

- Any issues, text Mary Mullins Redditt, Outreach Coordinator and TAC Facilitator

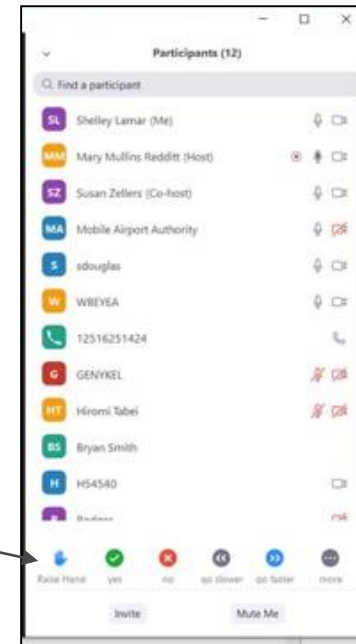
- 251-802-3341 (include who you are)

- Meeting agenda and Zoom logistics

- Attendees will be muted until called on

- Use virtual hand during discussion to speak

- Click on participants on bottom of screen to open box
    - Lower left corner of box, click raise hand
    - When called on, please state name, organization, question, who directed to, if applicable



- Roll call of attendees

# Opening Remarks

- By MAA President Chris Curry

# Check-In

- Updates related to COVID-19

# Agenda

- **Facility Requirements**
- **Alternative Future Terminal Locations**
- **Airport Layout Plan (ALP)**
- **Airfield Alternatives**
  - Runway 18/36
  - Runway 14/32
  - MRO/Hangars
- **Environmental Overview**
- **Q&A**

# Facility Requirements

- **Airfield**

- Design aircraft recommendation, demand-capacity analysis, runway length assessment

- **Terminal**

- Aircraft gates, check-in facilities, passenger security screening, baggage claim, etc.

- **Landside**

- Traffic counts, parking, rental car, terminal roadways, access roadways, curbside roadways

- **Airport/Airline Support & Other**

- Cargo, general aviation, air traffic control tower, fuel storage, etc.

# Future Alternative Terminal Locations and Airport Layout Plan

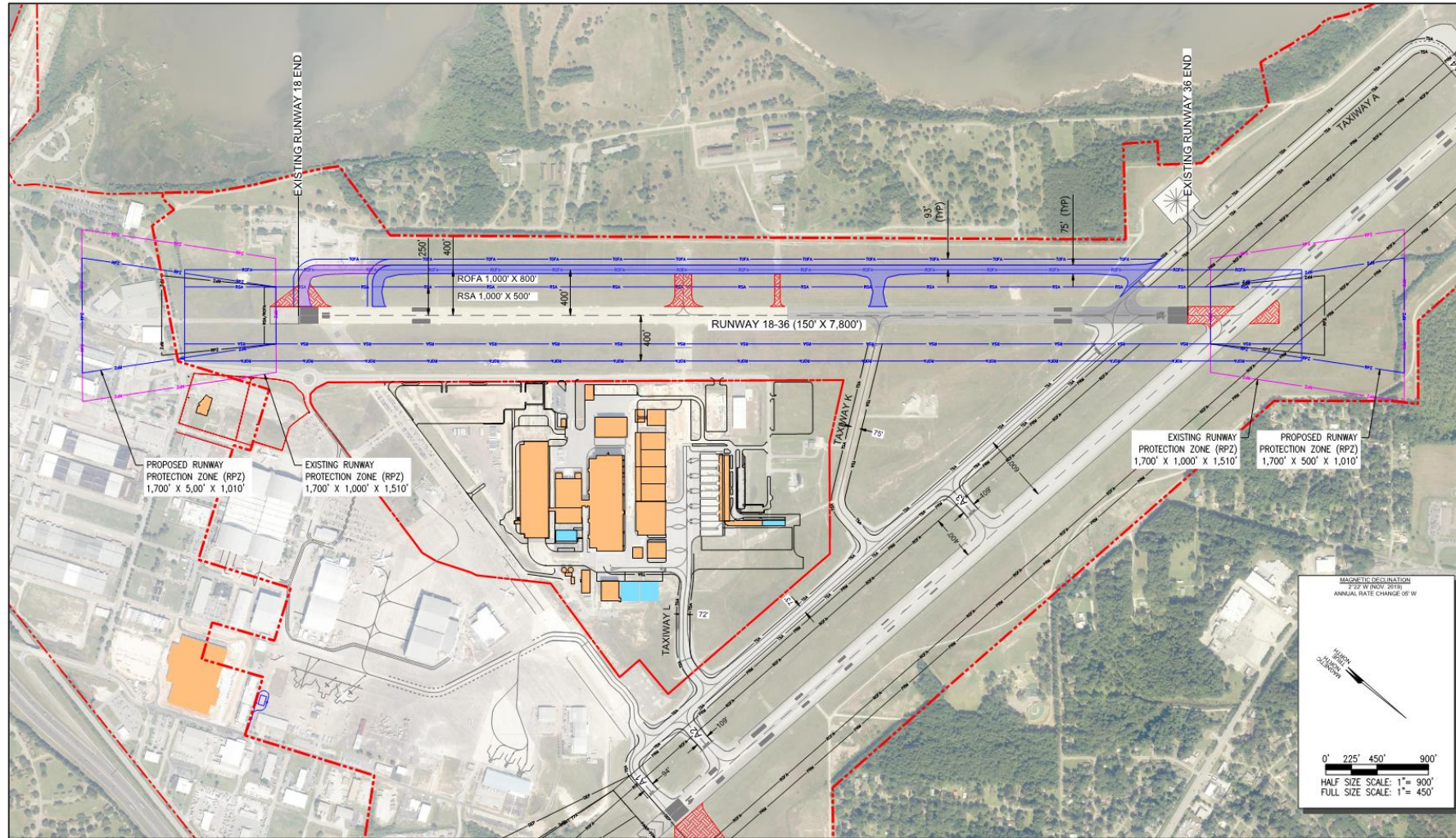
- The planning team is considering several sites and layouts for the future terminal
- Two-level facility with passenger boarding bridges
- Each option will require:
  - Construction of new terminal apron pavement
  - New taxilane off of Taxiway H and/or new taxiway parallel to Taxiway H
  - Improvements to existing roadways
  - Additional surface parking
  - Potential relocation of existing tenants
- Final siting decisions will be reflected on ALP

# Airport Layout Plan (ALP)

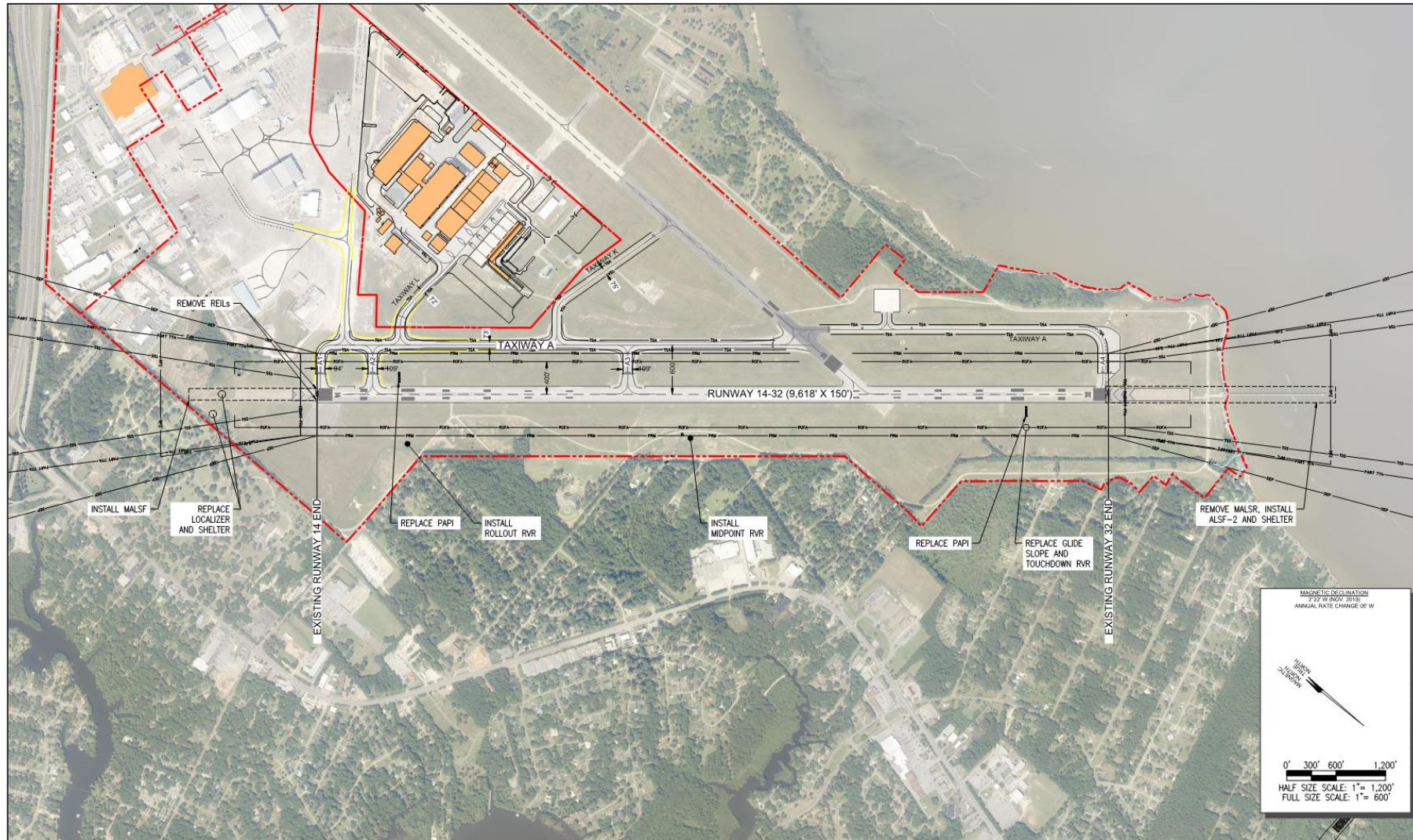
- **Set of 20 drawings depicting existing and future airfield facilities**
  - Focuses on development on airport property
  - Includes analysis of objects in runway approaches
  - Aeroplex shown for context
- **ALP used by FAA to study airspace of proposed development**
- **Current ALP is a requirement for FAA grant funding**



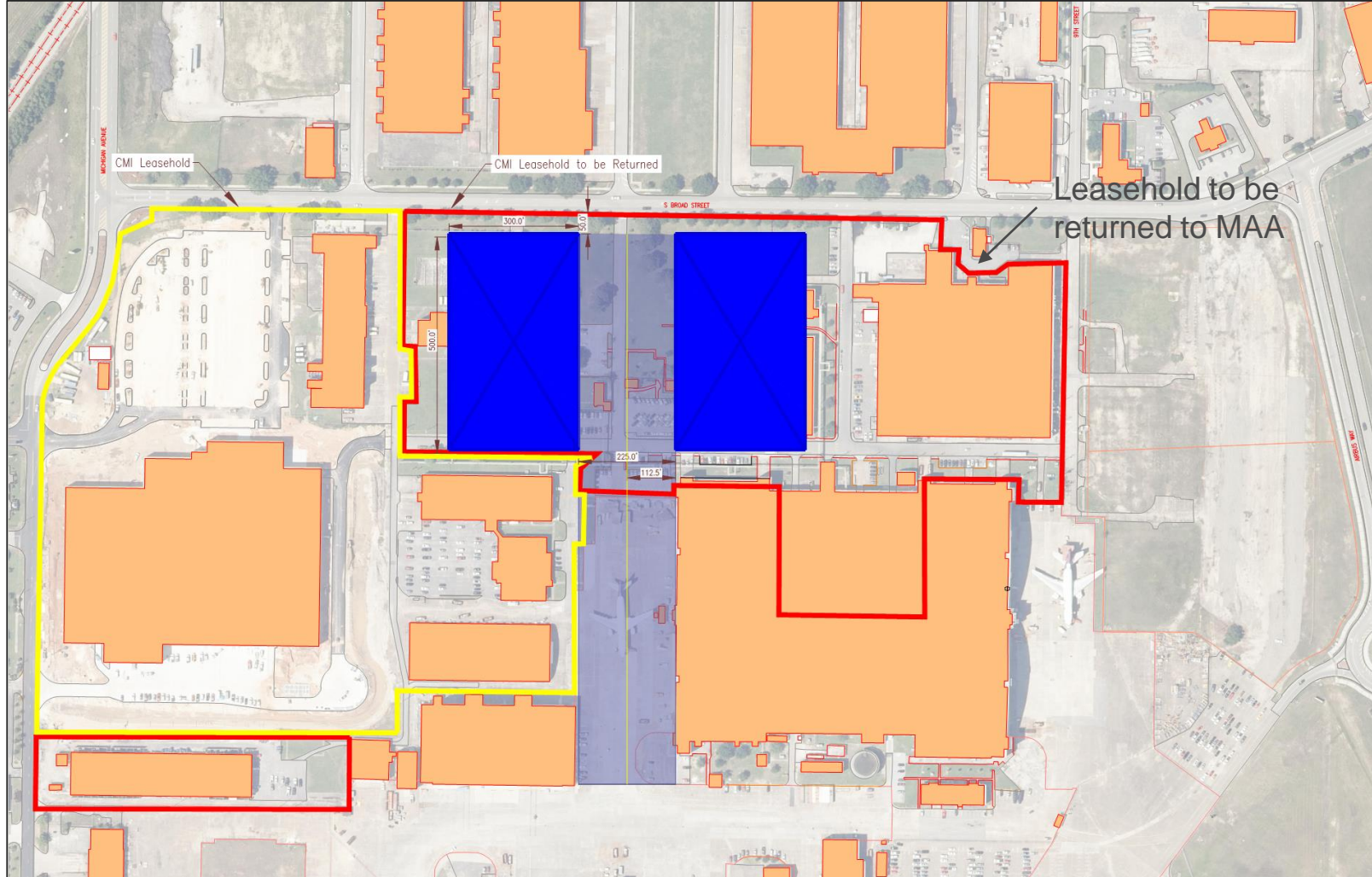
# Runway 18/36 Alternatives



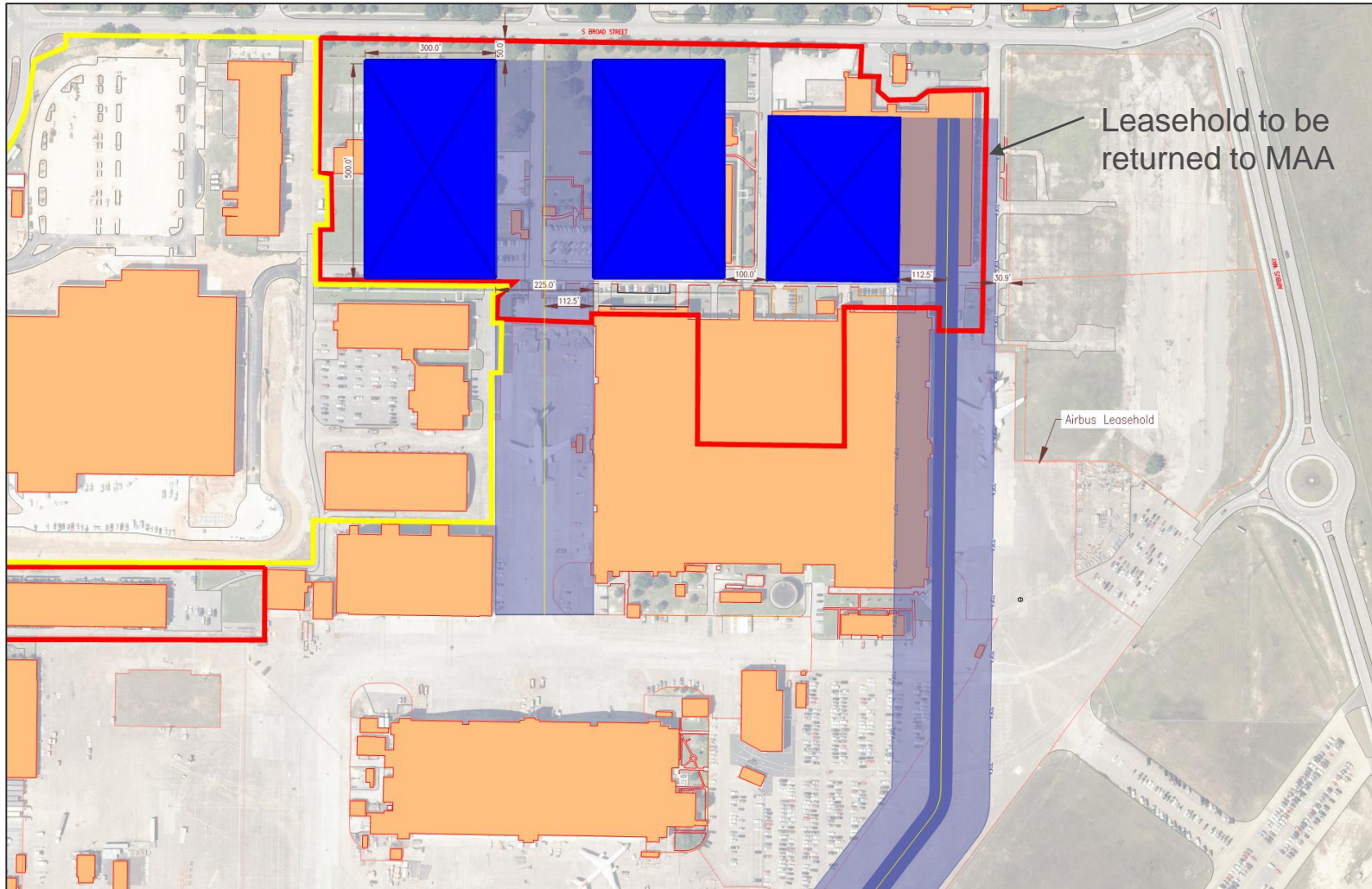
# Runway 14/32 Improvements



# MRO/Hangar Alternatives



# MRO/Hangar Alternatives



# Environmental Overview

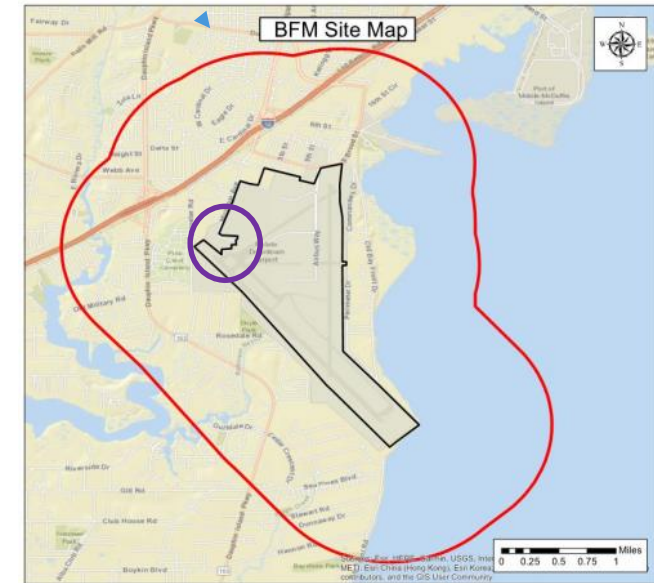
- **“Proposed actions” that have potential to impact the environment, alter airport operations or obstruct airport navigation are required to be evaluated under the National Environmental Policy Act (NEPA) and its implementing regulations issued by the Council on Environmental Quality (CEQ) [codified in 40 CFR Parts 1500-1508].**
- **The FAA can only “unconditionally” approve change to an ALP if an environmental analysis has been prepared in accordance with NEPA and CEQ regulations.**
- **FAA Order 1050.1B and 5040.B establishes FAA policies and procedures to help airport comply with NEPA environmental review.**

# Environmental Overview

Environmental Categories	Resources Evaluated
Air Quality	Greenhouse gas emissions, construction emissions
Water Resources	Wetlands, creeks, floodplain, surface waters, stormwater management
Biological Resources	Protected plant, fish and wildlife species
Section 4(f) Sources	Parks, Wildlife Refuge, Public Lands
Noise-compatible land use	Local jurisdictions, community development plans, existing land use
Hazardous Materials	Solid Waste, Pollution Prevention Plans

# Environmental Overview

- Proposed action alternatives are evaluated from an environmental perspective for impact.
- Proposed actions that require environmental effects evaluation:
  - New terminal construction
  - Roadway improvements
  - New taxilane(s)
  - Building demolition
  - Tenant relocations
- The overview presents environmental conditions and constraints for consideration during planning.



- Legend:
- Airport Boundary
  - Environmental Study Boundary
  - Area surrounding future alternative terminal location

# Questions

- **Please use raise hand**

- (Click on participants and then on raise hand in lower left corner of participants box)
- State name, organization, question and who directed to, if applicable